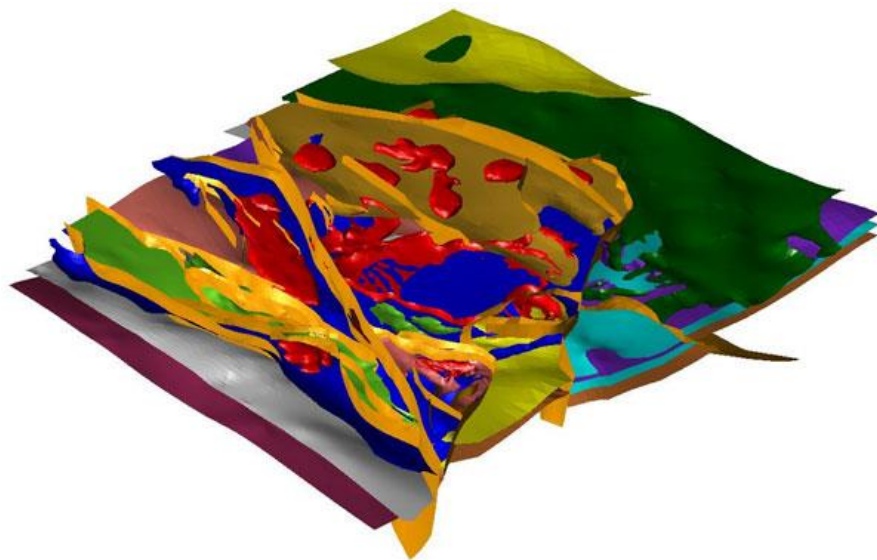


# Automated Geology from Drill Hole Data

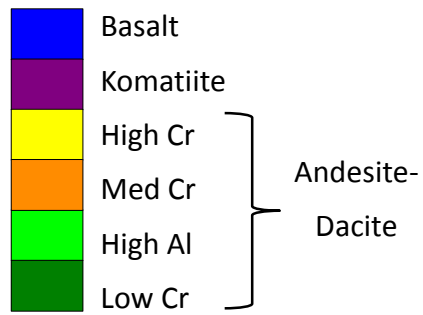
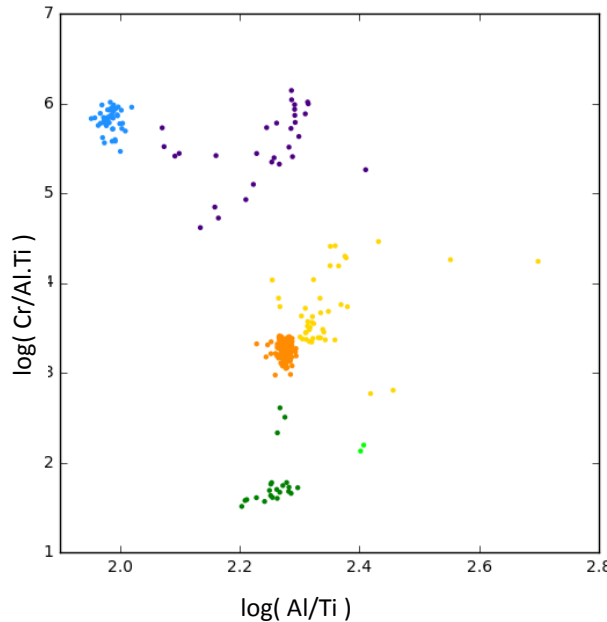
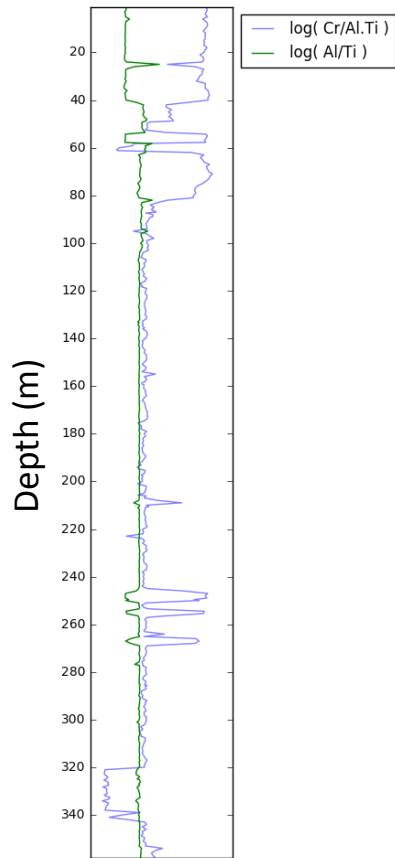
Dr June Hill Senior Research Scientist  
February 2018

MINERAL RESOURCES  
[www.csiro.au](http://www.csiro.au)

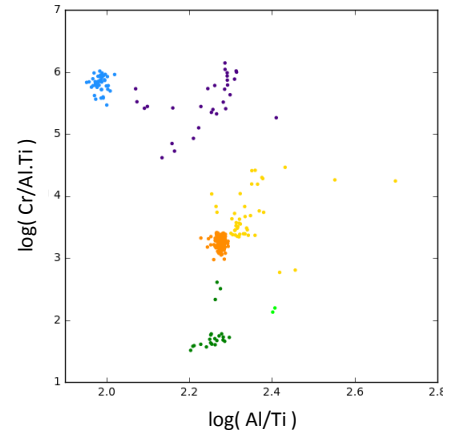
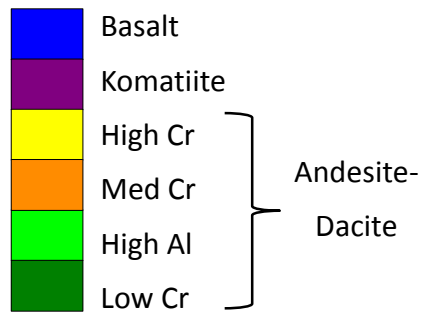
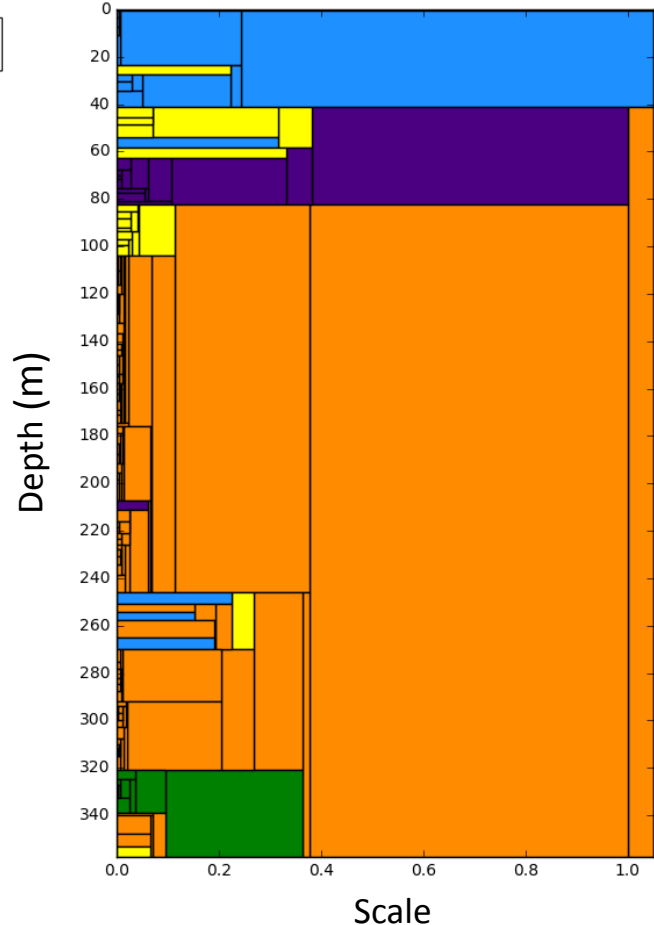
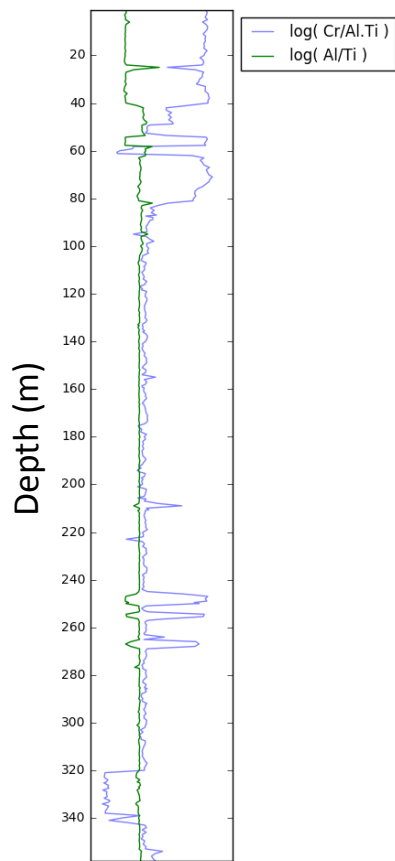


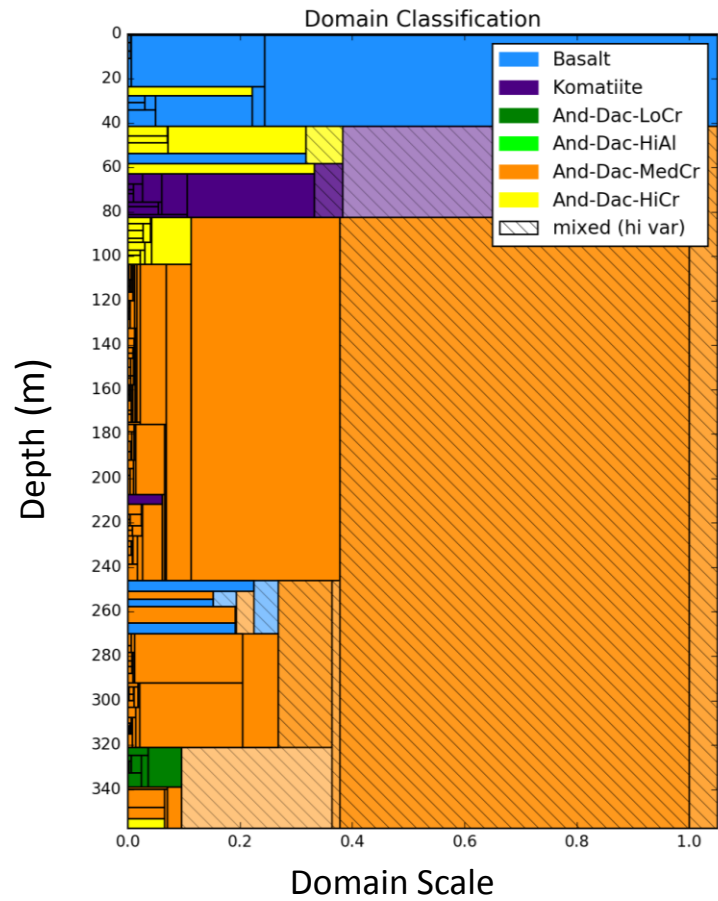
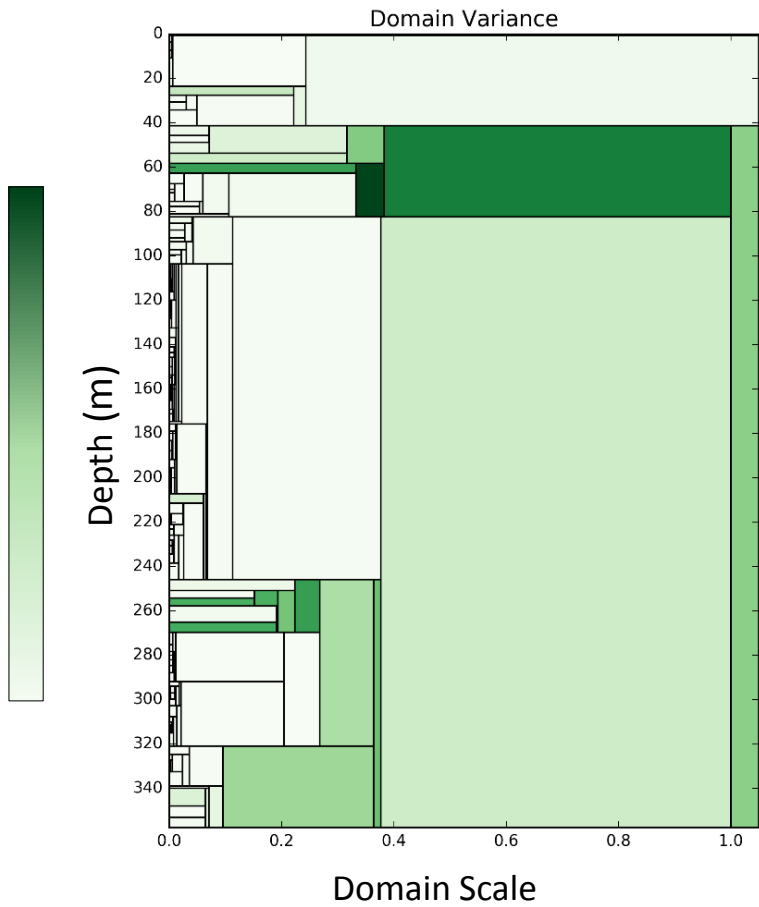


*image source: GlassTerra*

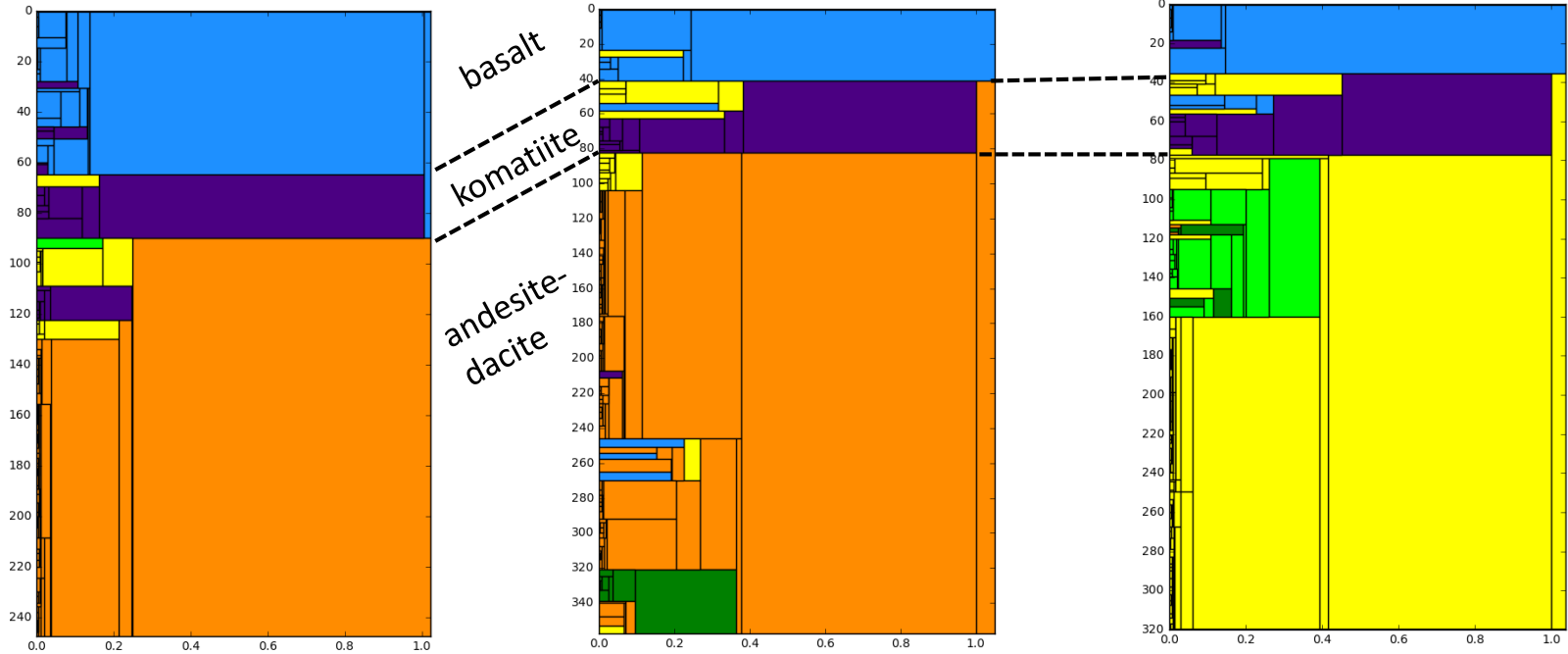
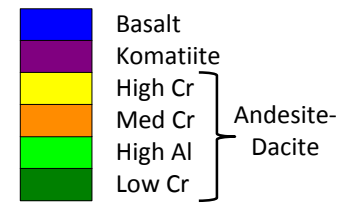


Classification: Steve Barnes



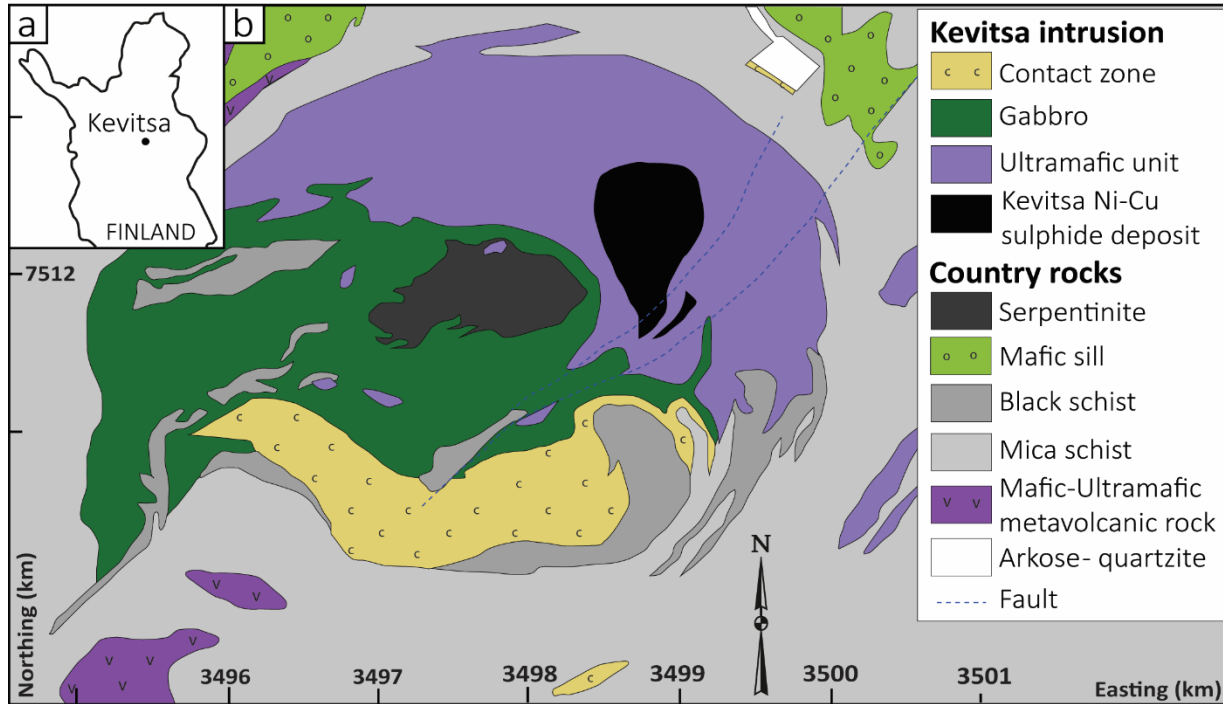


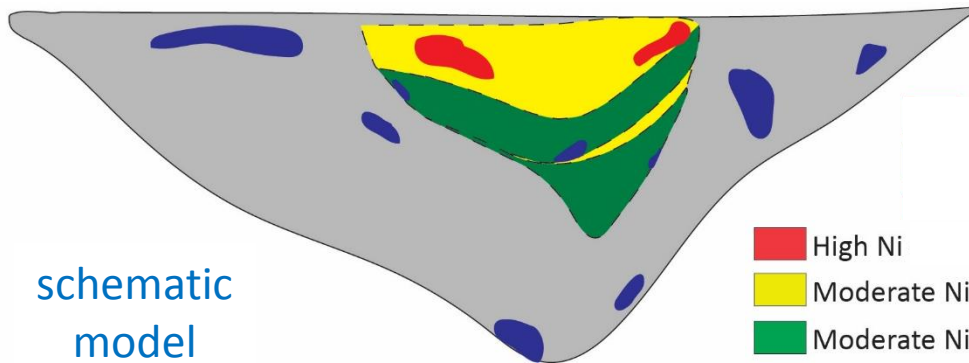
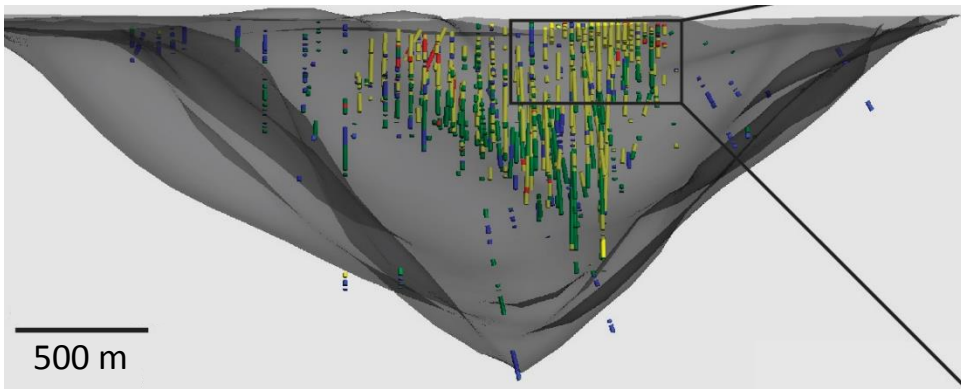
# Correlation between 3 drill holes using rock packages



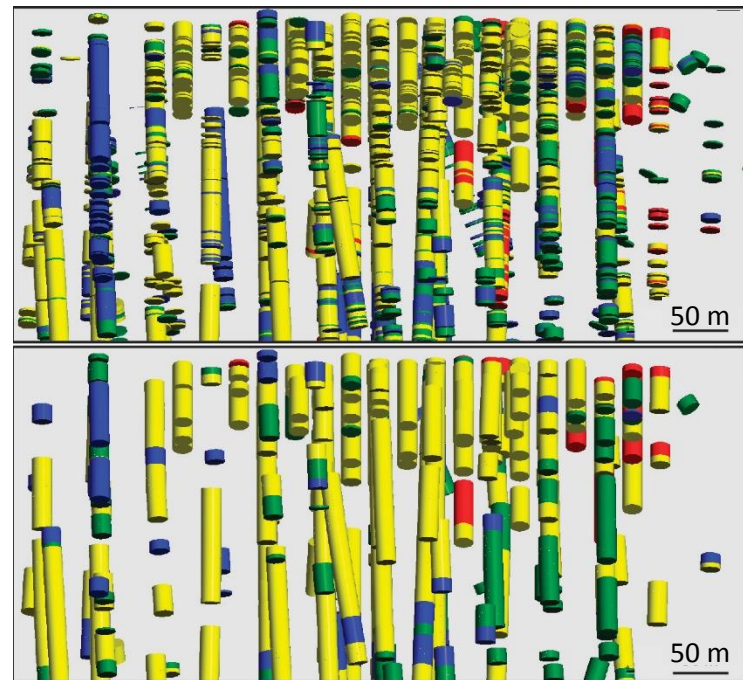
# Architecture of a Ni-PGE orebody in a layered intrusion

Data: ~ 90 000 Assays (from approx. 100 km core) including S, Ni, PGE





- High Ni
- Moderate Ni - High Pd
- Moderate Ni - Low Pd
- High S - Low Ni
- Outline of the Kevitsa intrusion





# Accurately locating shale marker beds

