

CEI Update

Dr Heather Sparks
Manager, Grants and Engagement
Geological Survey of Queensland



Queensland Government climate targets

The Queensland Government has committed to the following targets to reduce emissions and take strong action on climate change:

- » **50% renewable energy target by 2030**
- » **30% emissions reduction below 2005 levels by 2030**
- » **Net zero emissions by 2050**

QUEENSLAND resources industry development plan

June 2022



QRIDP has six key focus area:

1. grow and diversify the industry
2. strengthen our ESG credentials and protect the environment
3. foster coexistence and sustainable communities
4. ensure strong and genuine First Nations partnerships
5. build a safe and resilient future workforce
6. improve regulator efficiency

CEI is a New Economy Minerals Initiative

- Fast-tracking **discovery** and **development**
- Huge global shifts underway
- Geopolitical struggle



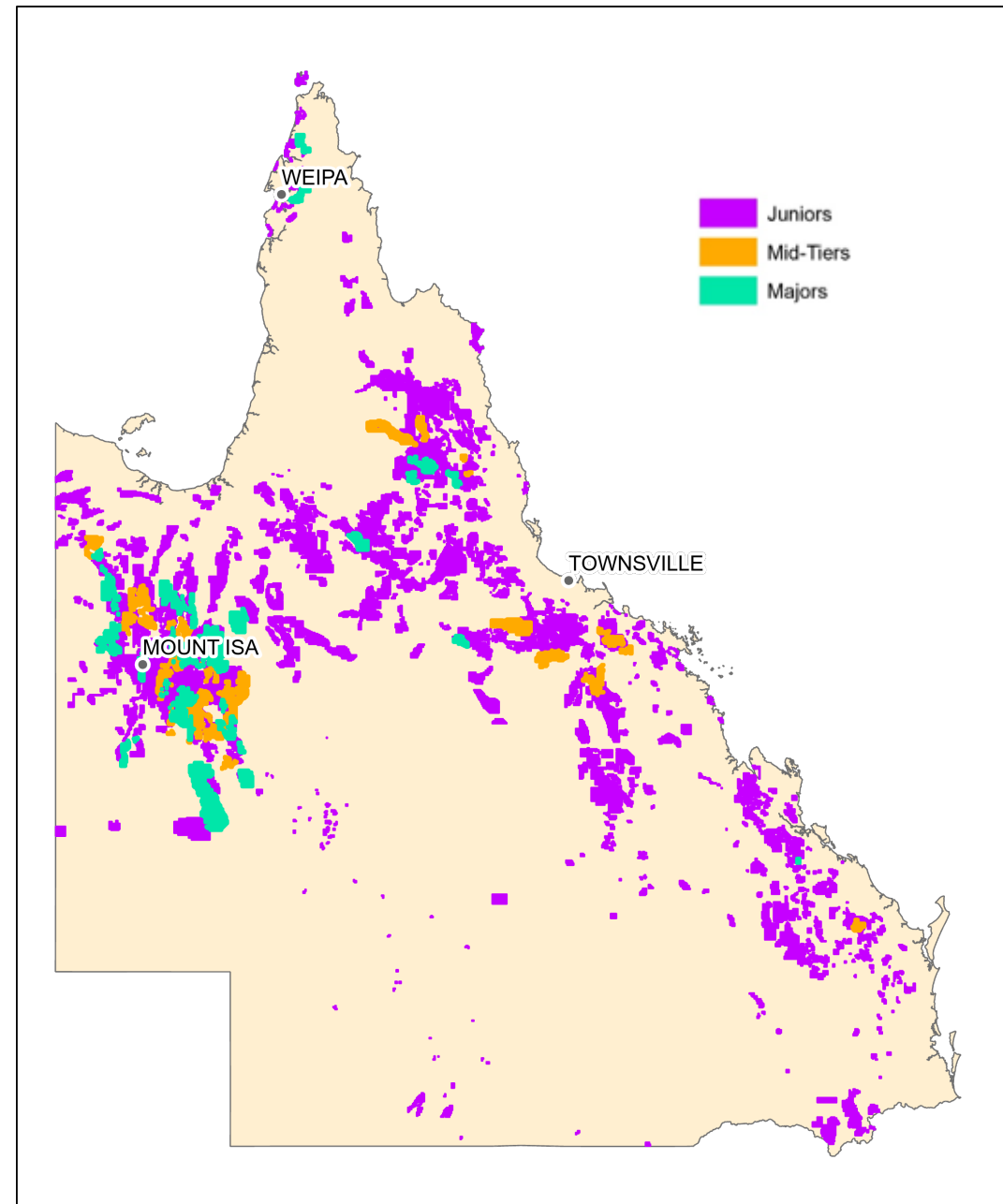
Clean energy demand for critical minerals set to soar as the world pursues net zero goals

5 May 2021



Area held by companies in market capital terms:

83%	Juniors/private	<\$200M
8%	Mid-tier	\$1B
9%	Major	>\$10B

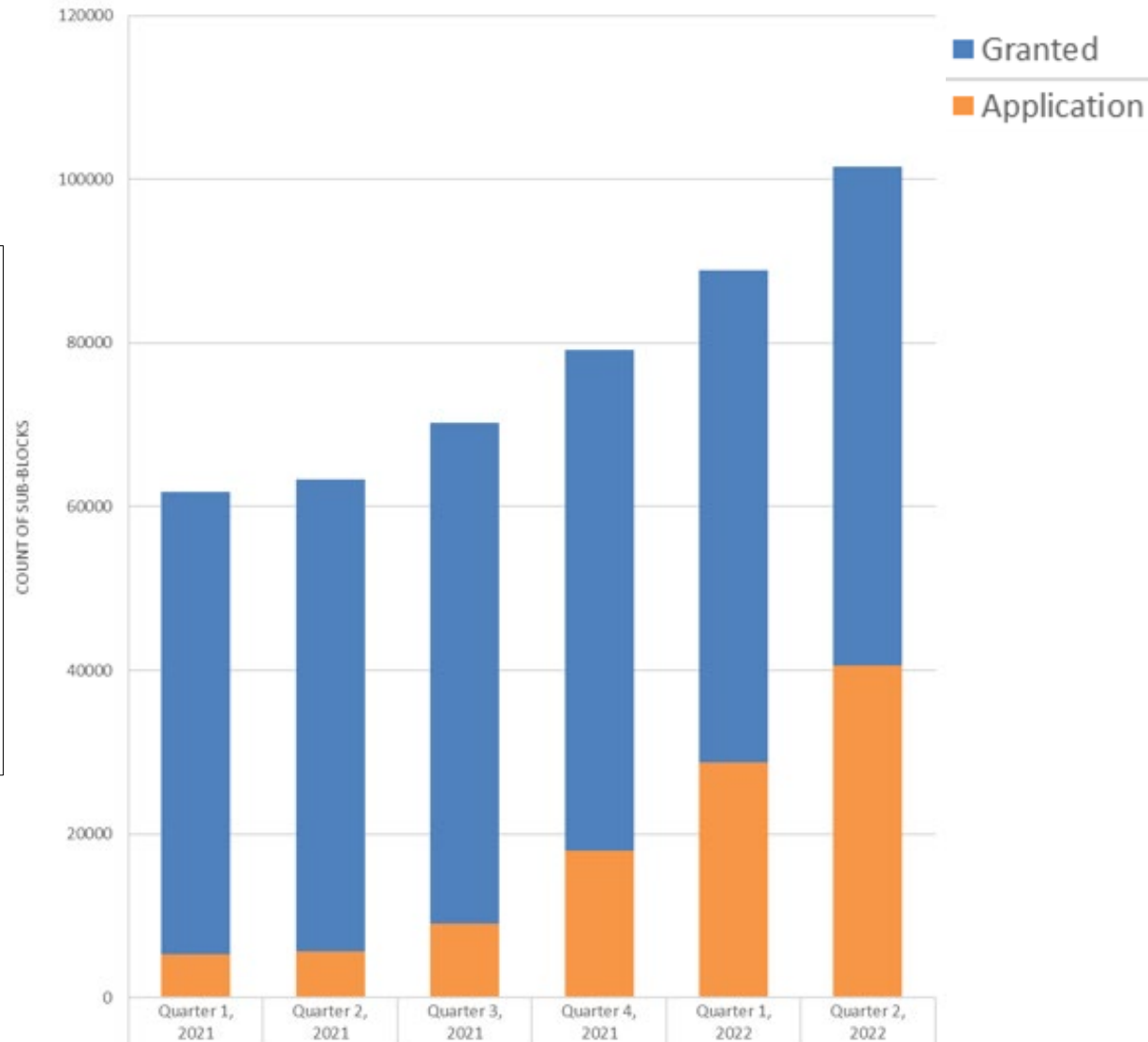


Exploration activity at an all-time high in Queensland

Currently

- **1842** – Exploration Permits in force
- **675** - companies holding Exploration Permits
- **614** – companies in application for Exploration Permits
- **Largest holder** – Rio Tinto

SNAPSHOT AT DAY 80 OF QUARTER
EPM GRANTED AND APPLICATION SUB-BLOCKS
(AREA)



Budget drives resources future

Published Tuesday, 21 June, 2022 at 03:45 PM

Minister for Resources

The Honourable Scott Stewart

Almost \$80 million will be invested in growing and transforming Queensland's resources sector along with making the state's lands and waters more productive as part of the 2022-23 State Budget.

Resources Minister Scott Stewart said the \$79.6 million department budget would help grow and diversify the resources industry into the future with a focus on good solid jobs and projects in Queensland's emerging new economy minerals sector.

A key investment is \$40 million over four years, and an ongoing \$10 million a year to improve the productivity of Queensland's land resources and support regional jobs.

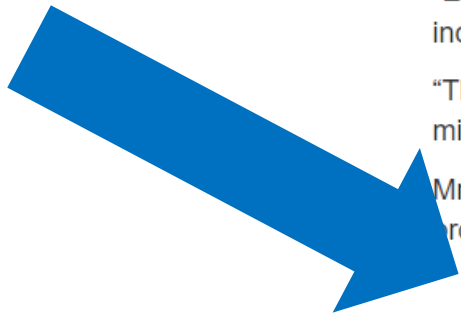
Mr Stewart said the budget continued the Palaszczuk Government's long-standing commitment to driving exploration, increasingly focussing on the new economy minerals needed for renewable energy and advanced technologies.

"Exploration is the lifeblood of new resources projects and jobs, and its essential we continue to support exploration, including with free access to first-rate geological data," he said.

"The latest statistics show that exploration is going strong in Queensland, with exploration expenditure up to \$726.5 million in year to March, up 3.1 per cent on the same period a year ago."

Mr Stewart said the 2022-23 State Budget will continue to drive exploration and the next generation of good jobs and projects for the resources sector through:

- \$17.5 million over four years for grants to explorers under the Collaborative Exploration Initiative, supercharging the search for new economy minerals
- \$10 million over two years for airborne and ground-based geophysical surveys
- \$5 million over two years for research to better define Queensland's new economy minerals potential



\$17.5 million into CEI for the next 4 years

Round 7 \$2.5 MIL + \$2.5 MIL 2023 - 2024

Round 8 \$5 MIL 2024 - 2025

Round 9 \$5 MIL 2025 - 2026

Round 10 \$5 MIL 2026 - 2027

ROUND 7 - What Has Changed?

- **Genuine** new economy mineral exploration
- \$250,000 cap
- **One** grant per round
- Preference to first time recipients
- No geographical focus
- QRIDP



Eligibility Criteria - Before You Apply

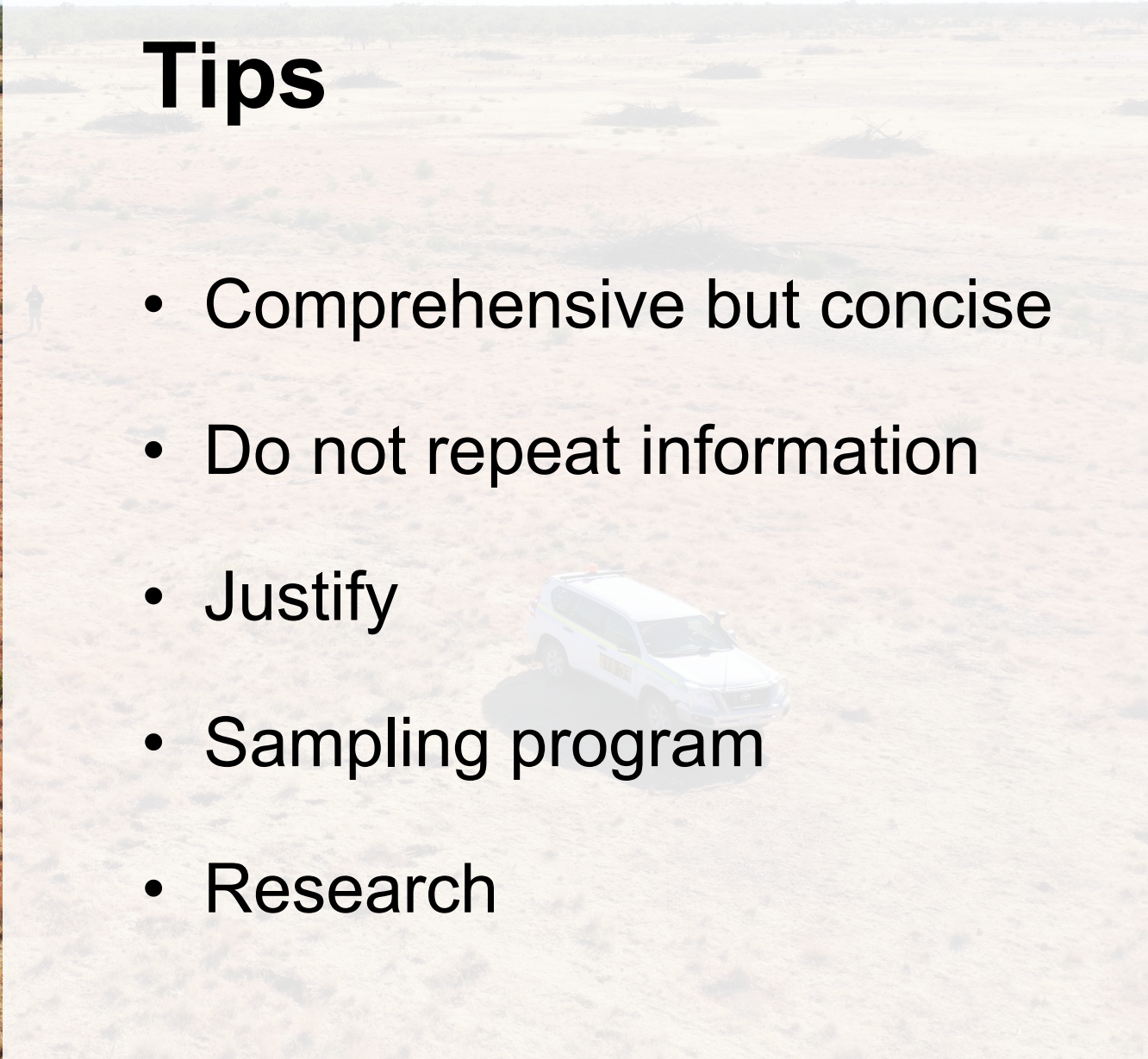
- Hold tenure in Queensland
- Compliant
- Land access agreements
- Cultural heritage clearance
- Confirmation of support
- ABN and registered for GST
- Public Liability insurance for minimum of \$10M
- Financial capability





Tips

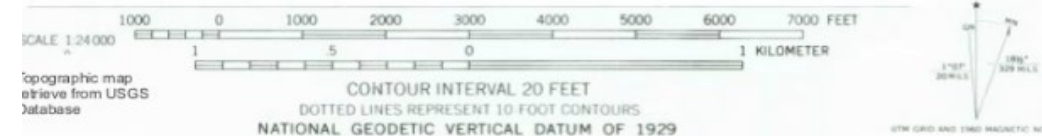
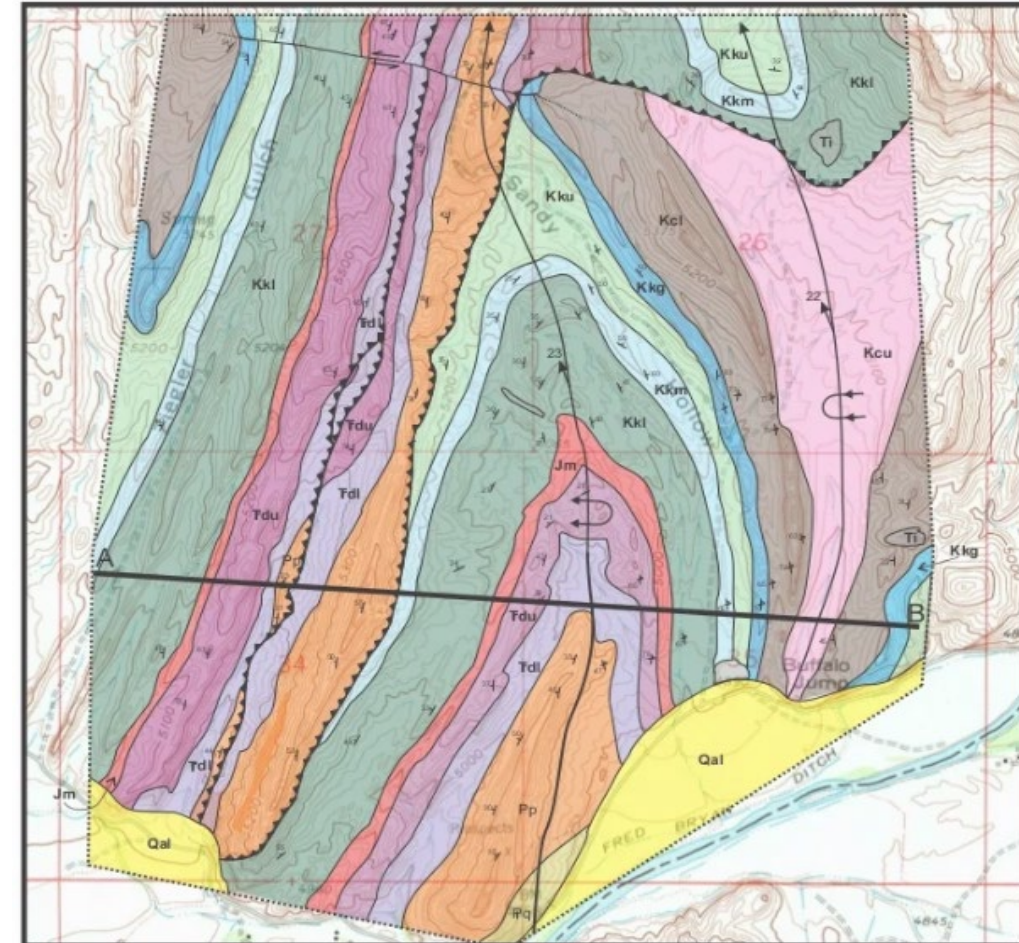
- Comprehensive but concise
- Do not repeat information
- Justify
- Sampling program
- Research



Tips con't

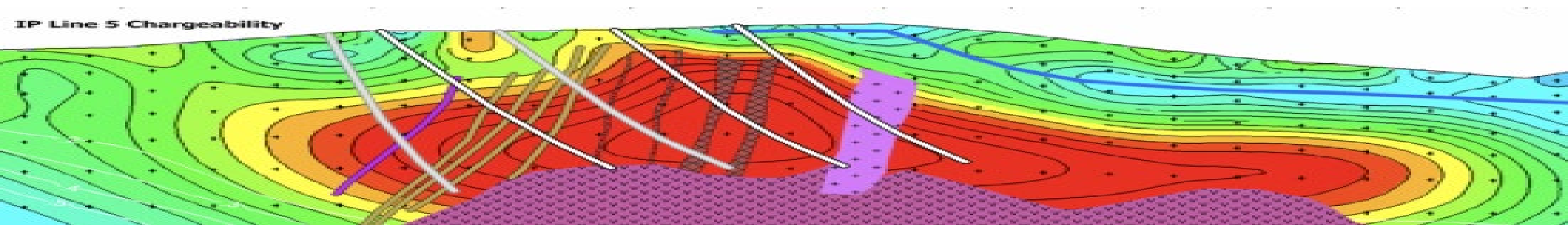
- Cross sections
- Maps and diagrams
- Explain your model
- Judged on technical merit
- Mandatory documents

Block Mountain Geologic Map summer 2014 by Anh Tran



Common Failures

- Insufficient preparation
- **EXPLAIN** how your project is collaborative
- Lacks innovation
- No map
- Poorly annotated diagrams
- Expected outcomes



- ☑ Need to ask Questions
- ☑ Want to stay up-to-date

GSQ@Resources.qld.gov.au

