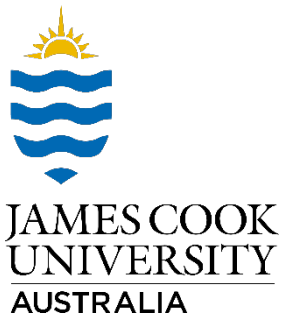

Automated Face Mapping in Underground Mining

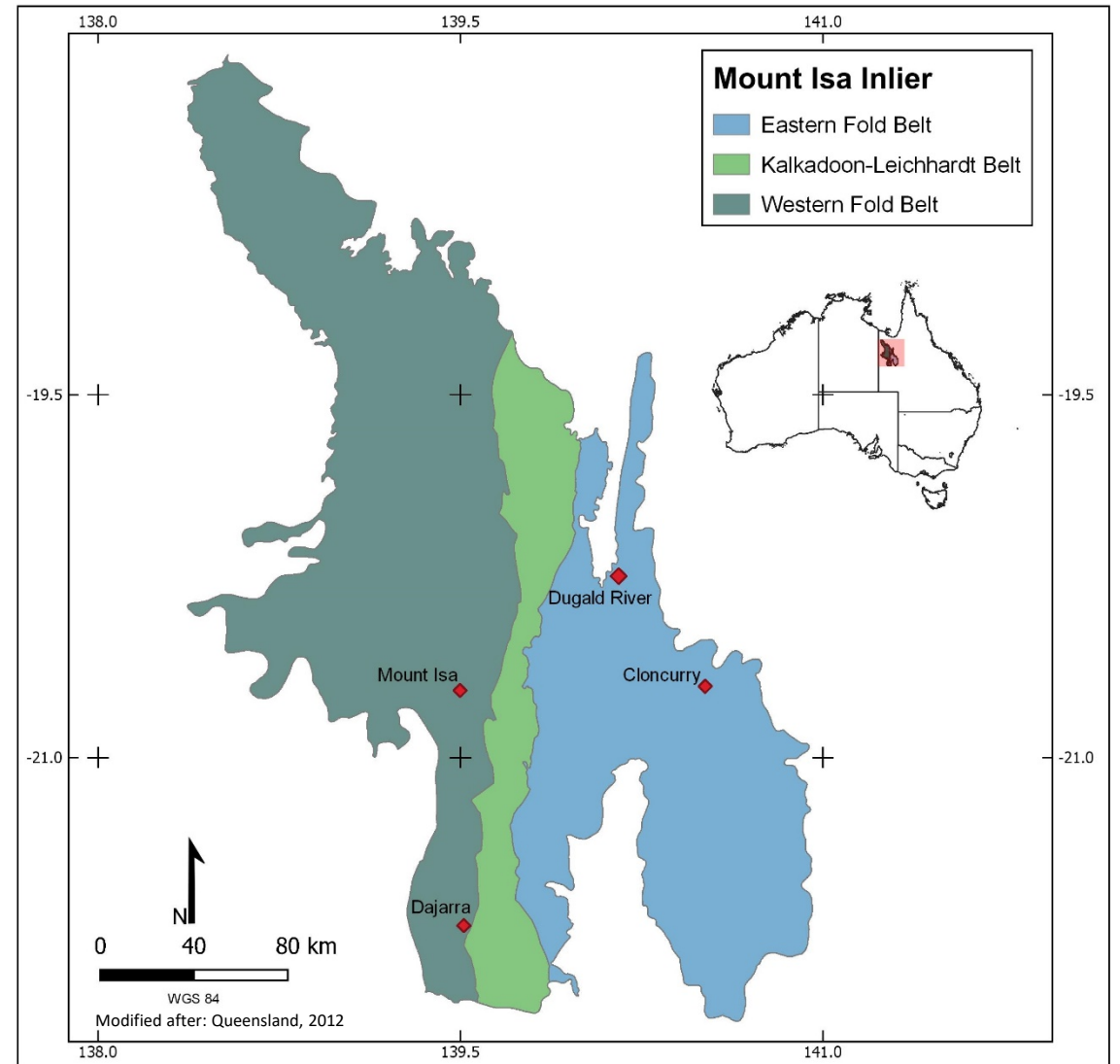


Introduction

- Dugald River Zn-Pb-Ag Mine
- Dugald River Geology
- Photogrammetry
- Orientated Data Declustering
- Automated Lithological Mapping
- Contact Mapping
- Questions

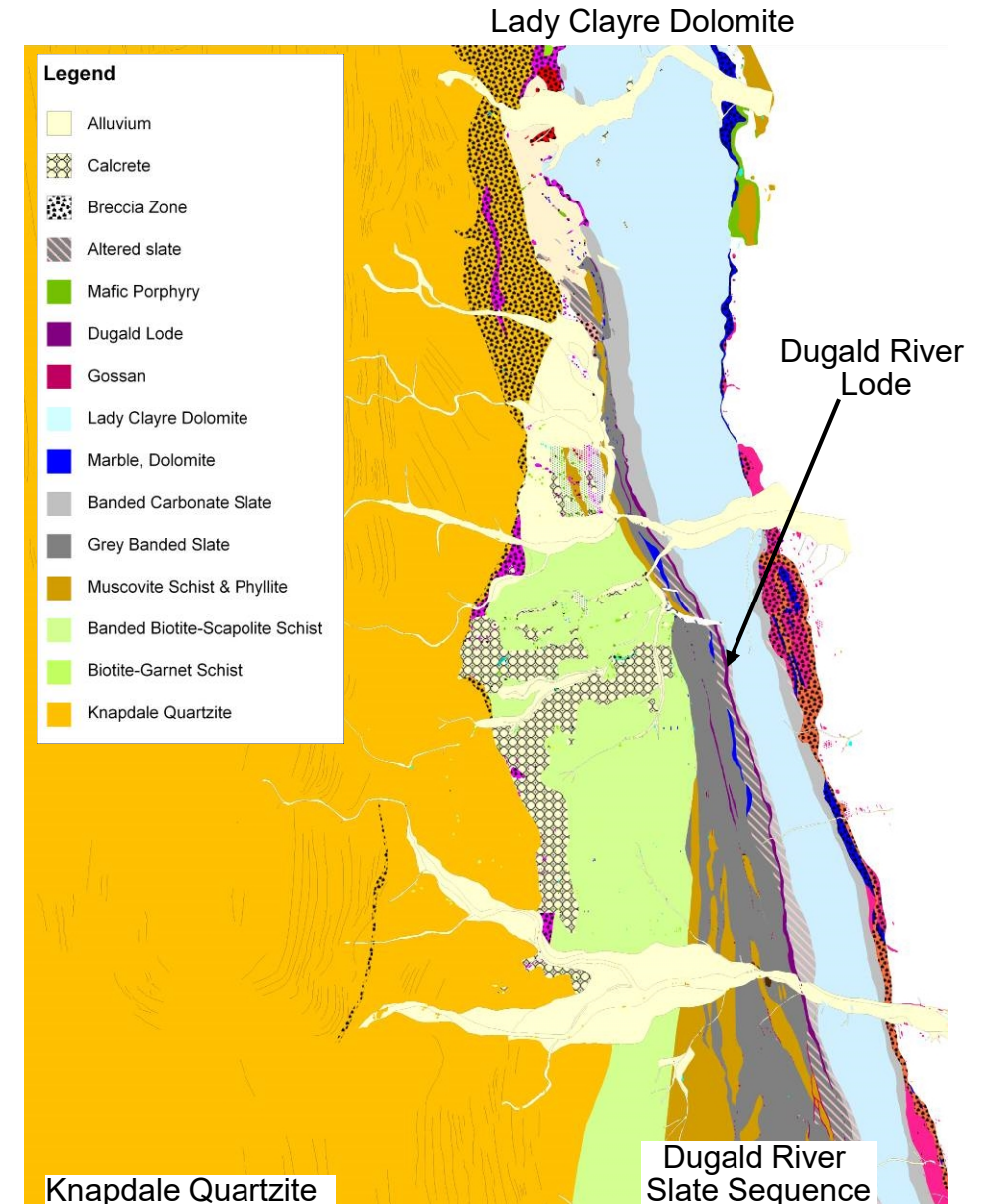
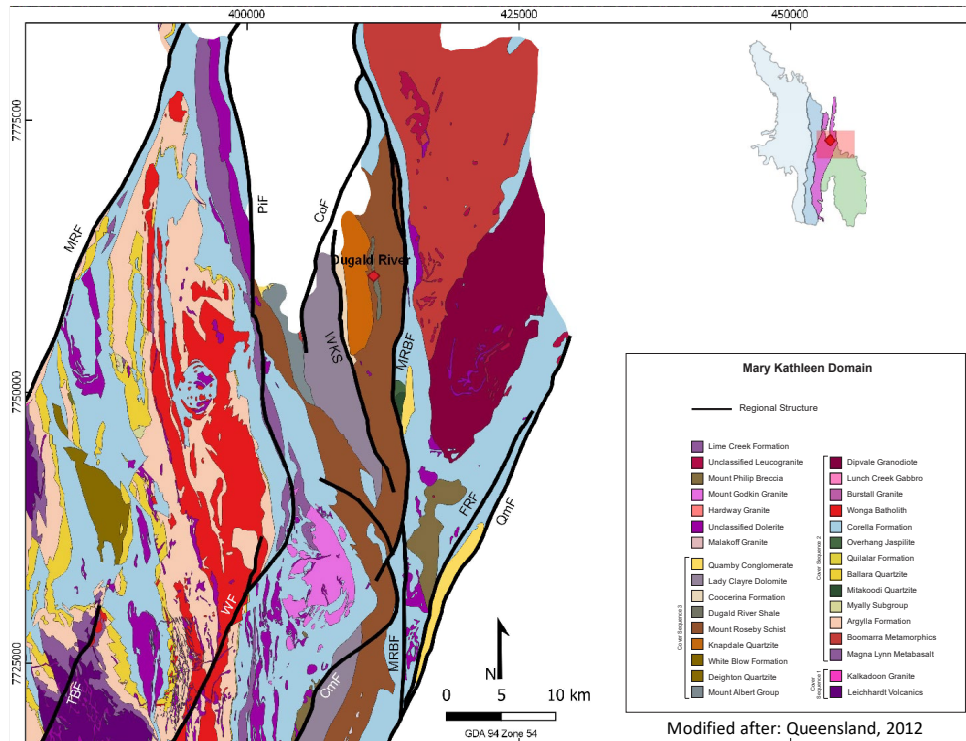
Dugald River Zn-Pb-Ag Mine

- Situated ~65 km NW of Cloncurry, Queensland
- World class deposit with 59.3 Mt
 - Zn @ 12.2%
 - Pb @ 1.6%
 - Ag @ 26 g/t
- Exploration target since 1939 (drillhole DR001) and has undergone further drilling through the years
- Development commenced in 2011 and production of Zn concentrate in November 2017
- Full ramp production expected to be 170k tonnes of Zn concentrate/yr with 25 yrs lom



Dugald River Geology

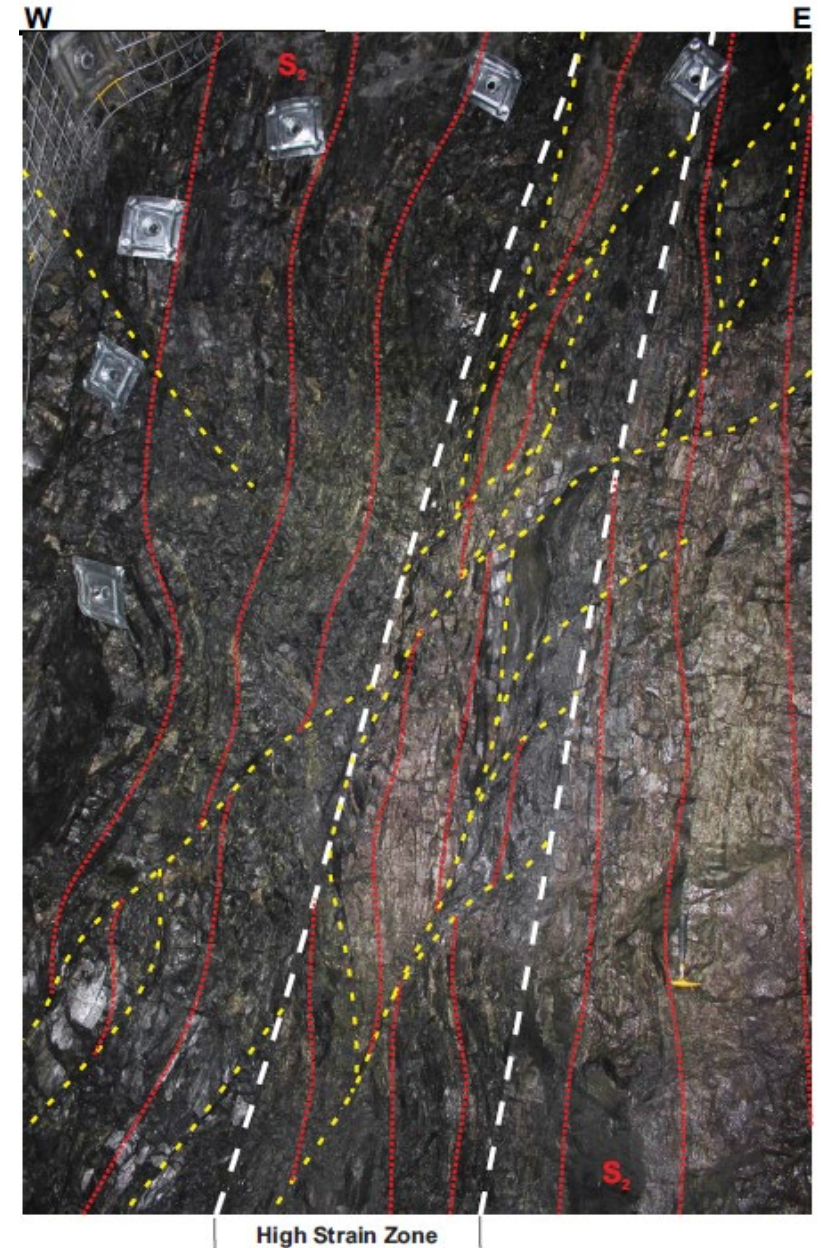
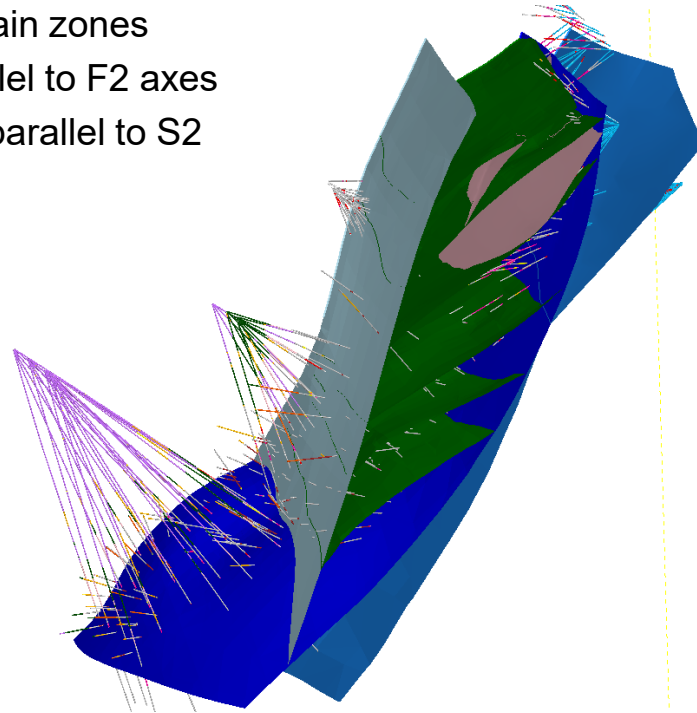
- Hosted by the Dugald River Slates, Mount Albert Group
- Maximum deposition age of 1686 Ma of Dugald River Slate Sequence



MMG, 2017

Structural Geology

- Complex deformation history during Isan Orogeny
 - Early ductile deformation (D1 to D3)
 - Brittle deformation up to D6
- D2 is the dominant event
 - Upright, F2 with associated axial planar cleavage (S2). Typically tight to isoclinal
 - Development of high strain zones
 - Boudinage aligned parallel to F2 axes
 - Porphyroblasts aligned parallel to S2



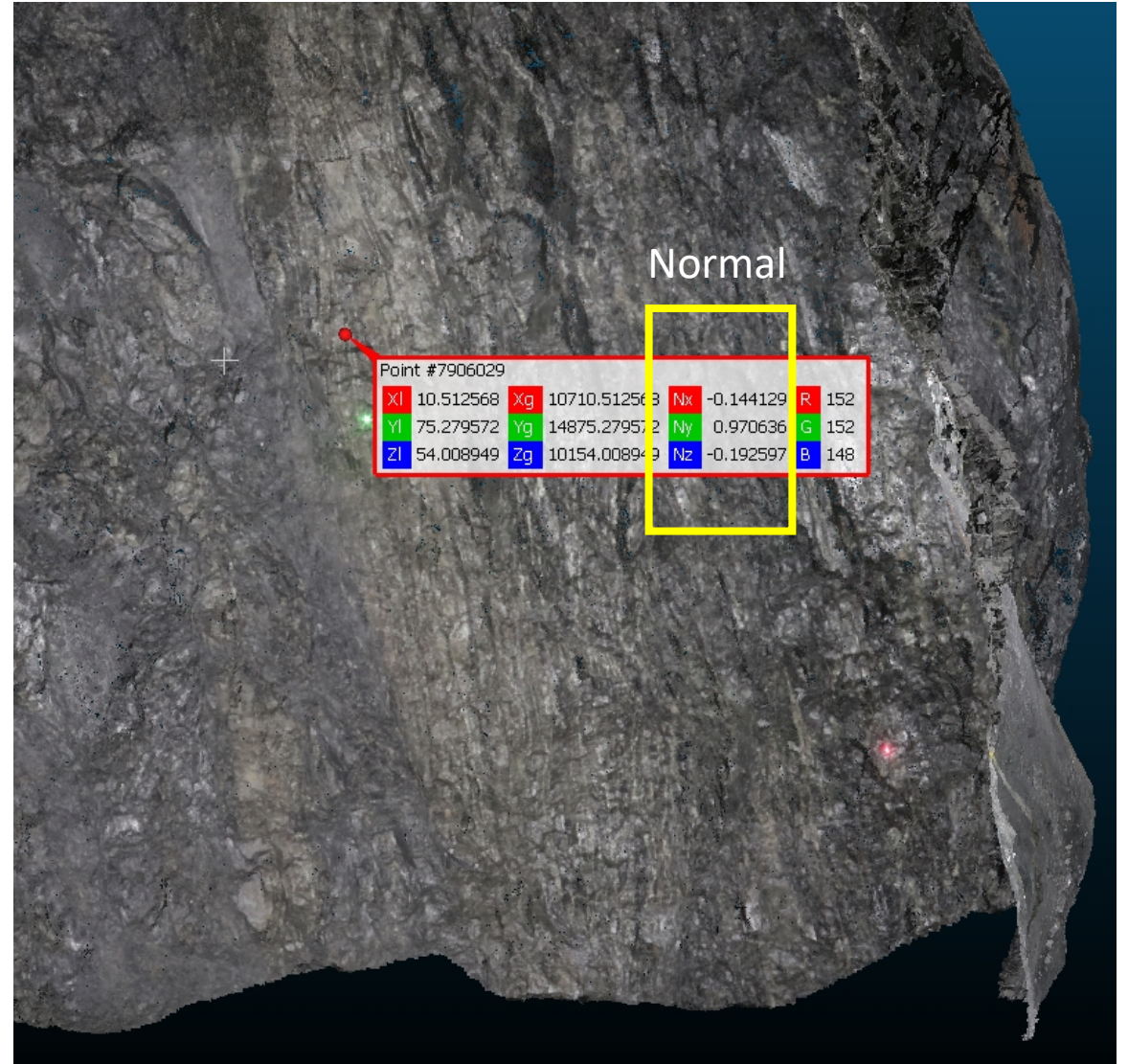
Photogrammetry

- Motivation
 - Safety
 - Easy to set-up
 - Virtual Outcrop
- Analysis
 - Digitising major structures
 - Orientation data extraction
 - Lithological mapping



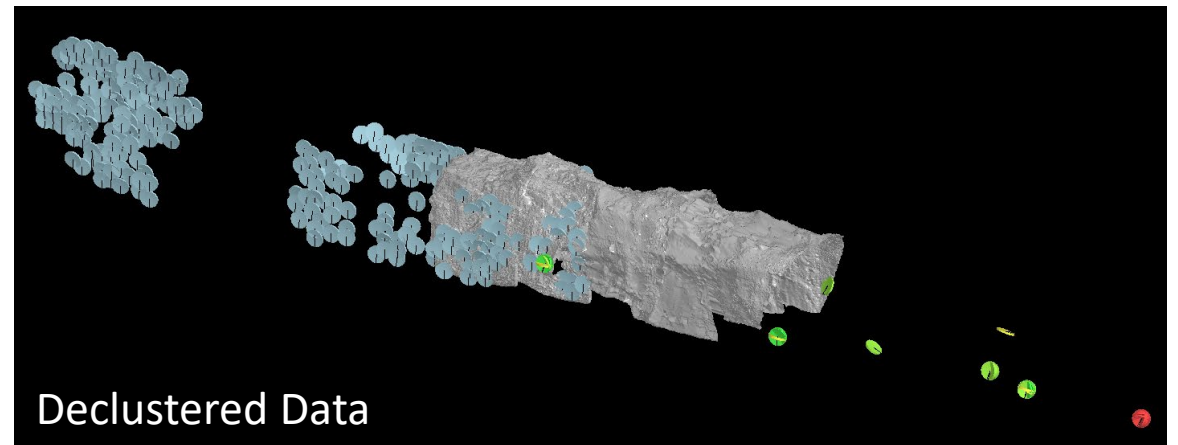
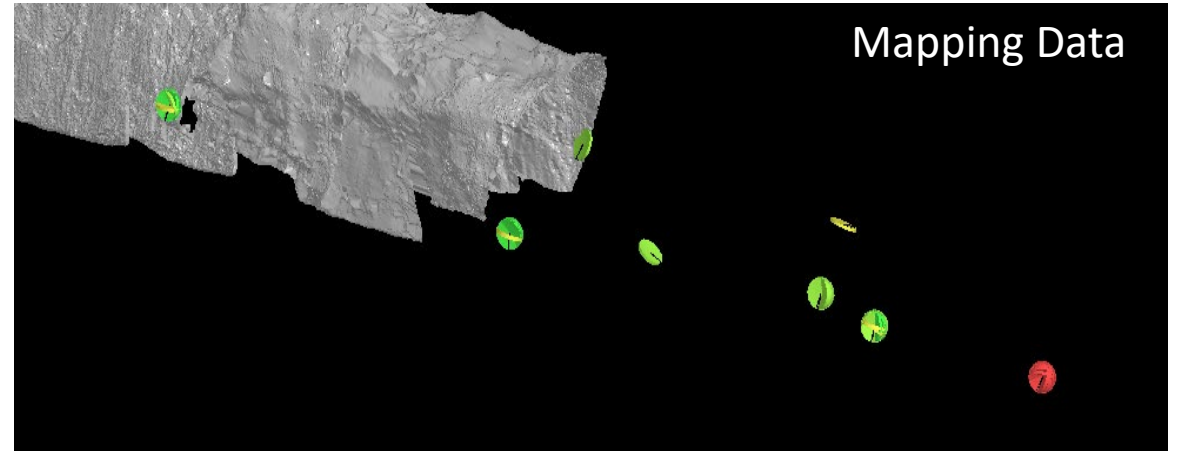
Orientated Data Declustering

- Dense point cloud
 - Millions of points
 - Stores RGB and normal information
- Normals
 - Normal vector of a geological plane
- Supervised
 - Mapping data defines point cloud filtering
 - Mapping done as part of development progression
 - Apply range to orientation data
 - Declustering of dense point cloud



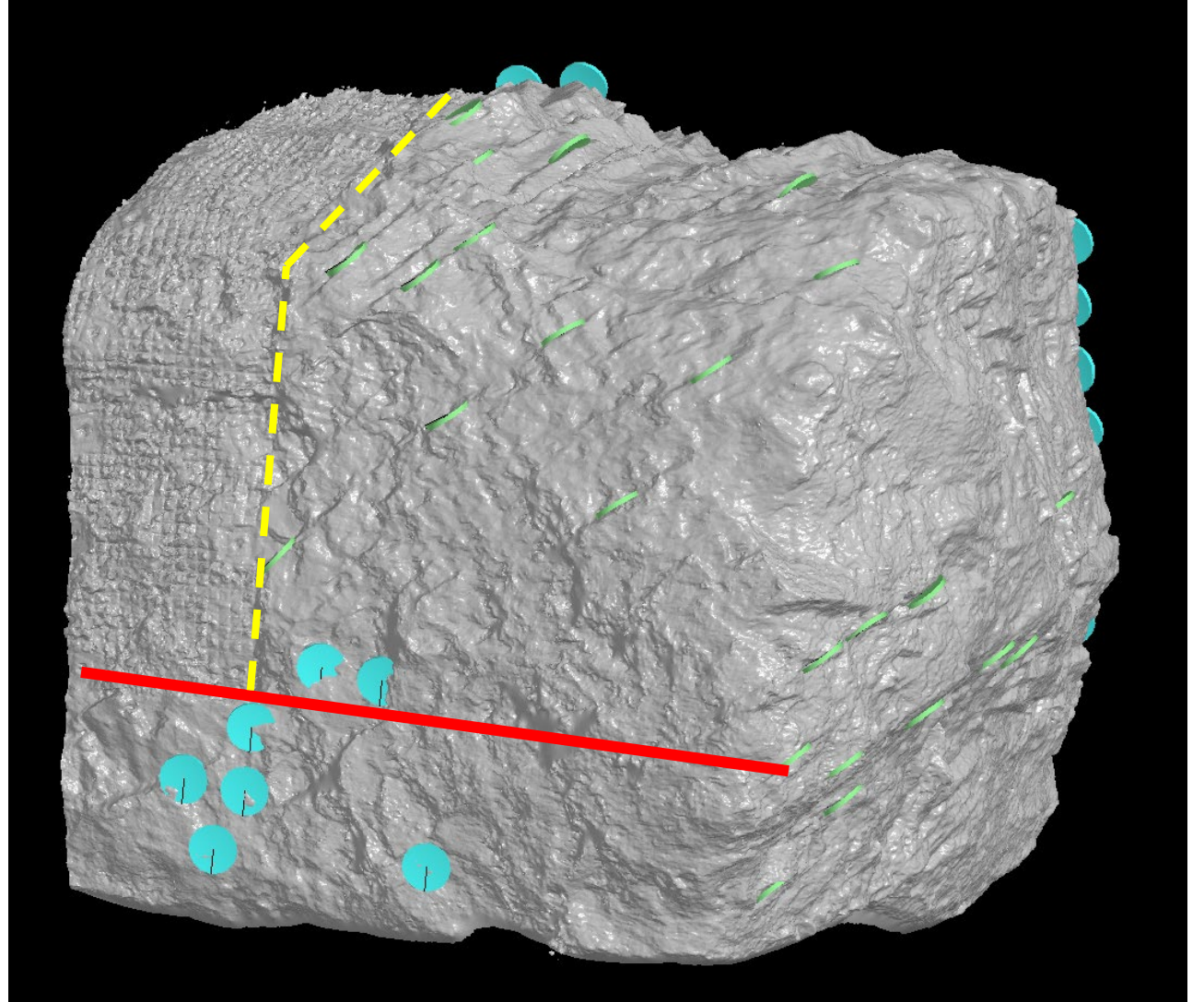
Orientated Data Declustering

- Dense point cloud
 - Millions of points
 - Stores RGB and normal information
- Normals
 - Normal vector of a geological plane
- Supervised
 - Mapping data defines point cloud filtering
 - Mapping done as part of development progression
 - Apply range to orientation data
 - Declustering of dense point cloud



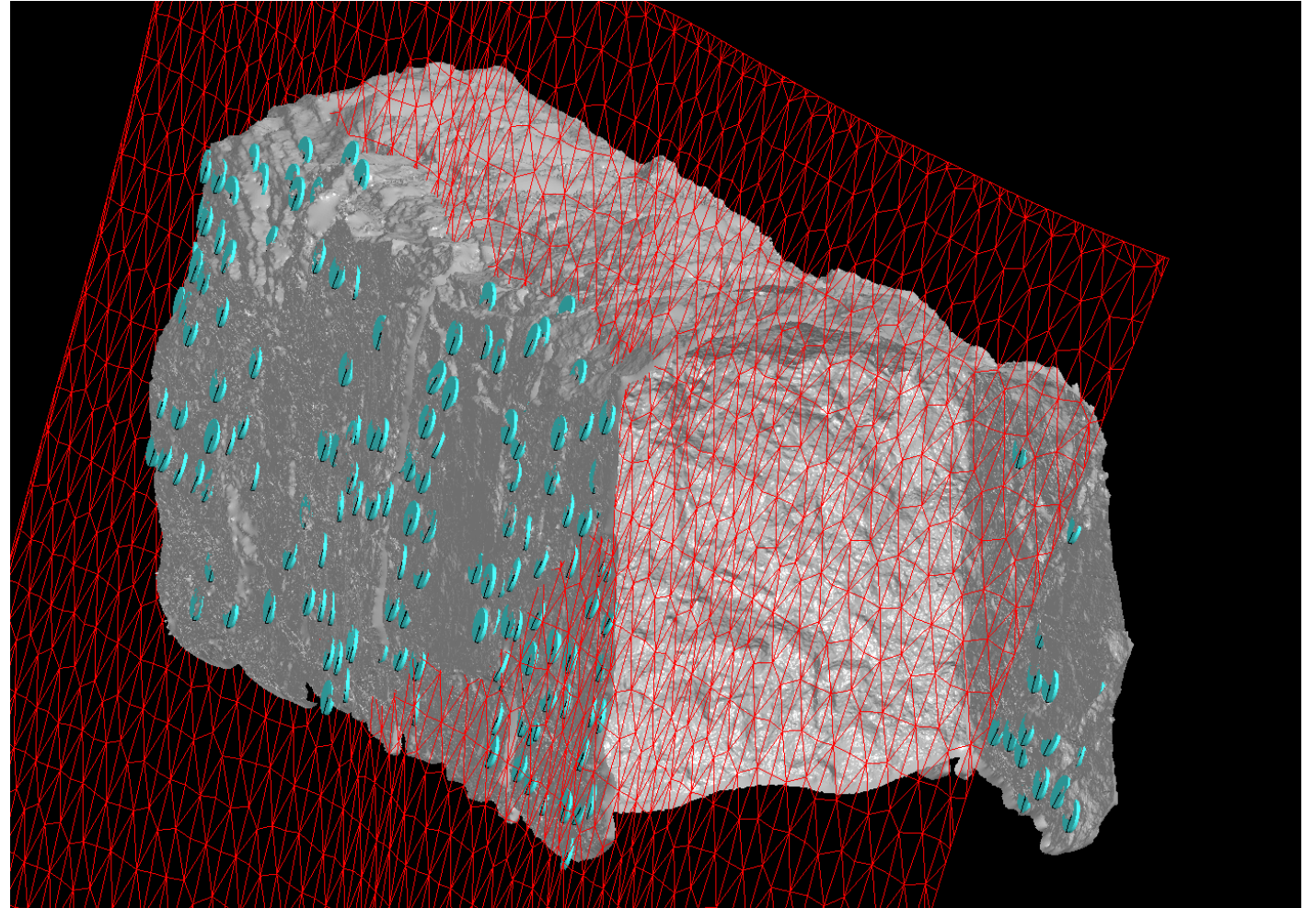
Orientated Data Declustering

- Backs and side wall mapping
 - Mesh at chest height
 - 4 m of unsupported backs



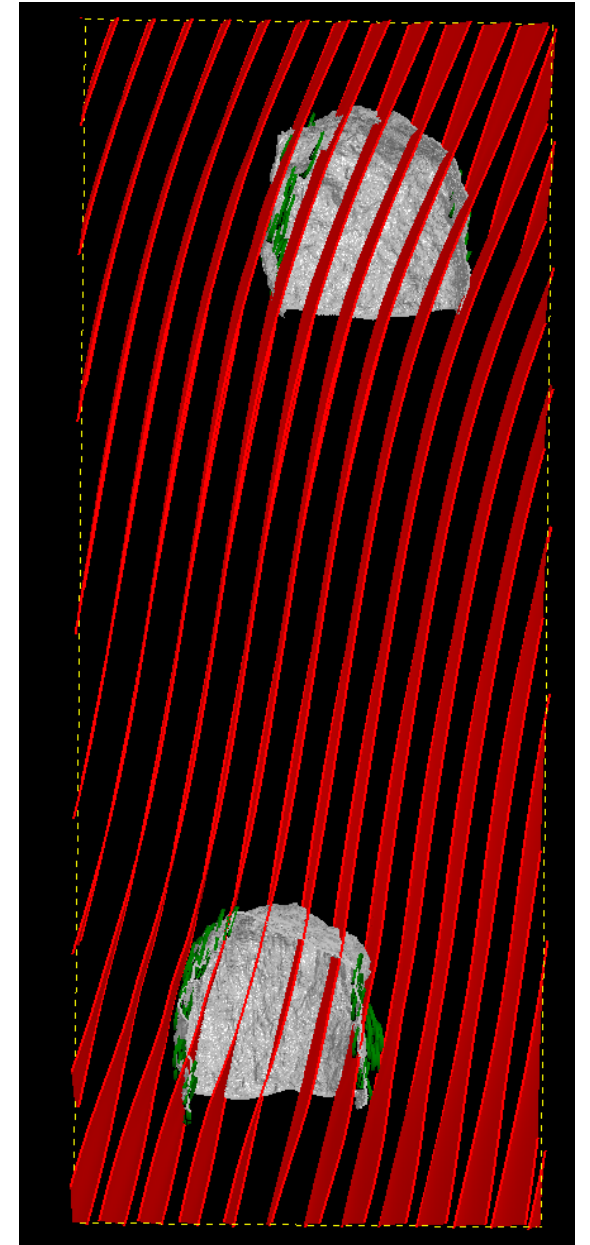
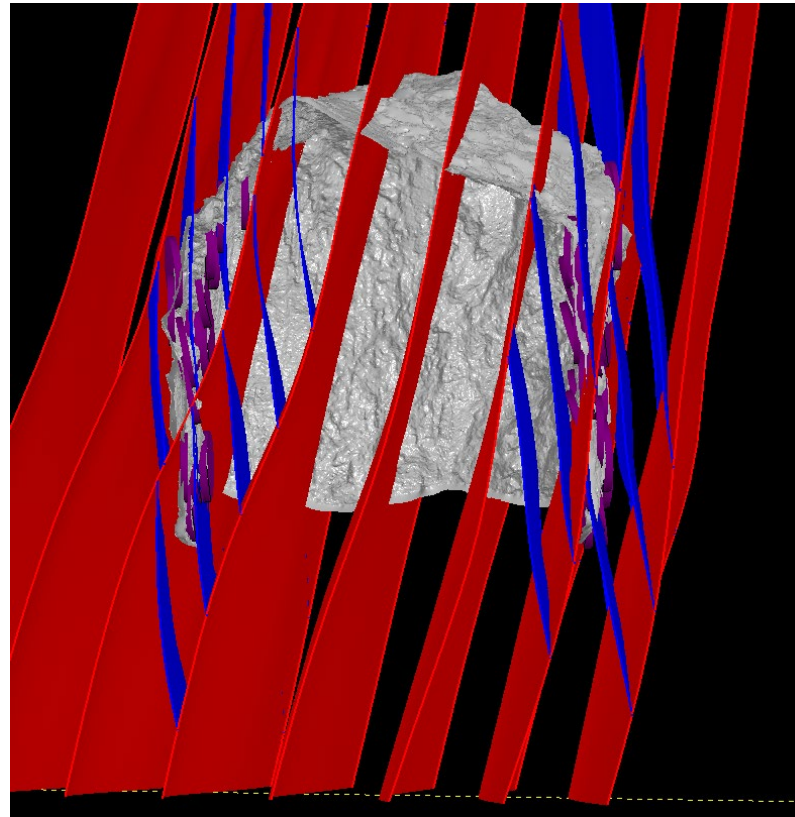
Orientated Data Declustering

- Form surface generation
 - View fabric in 3D
 - Aids in mine design
 - Combined with mapping and drilling
 - Delineates structural domains



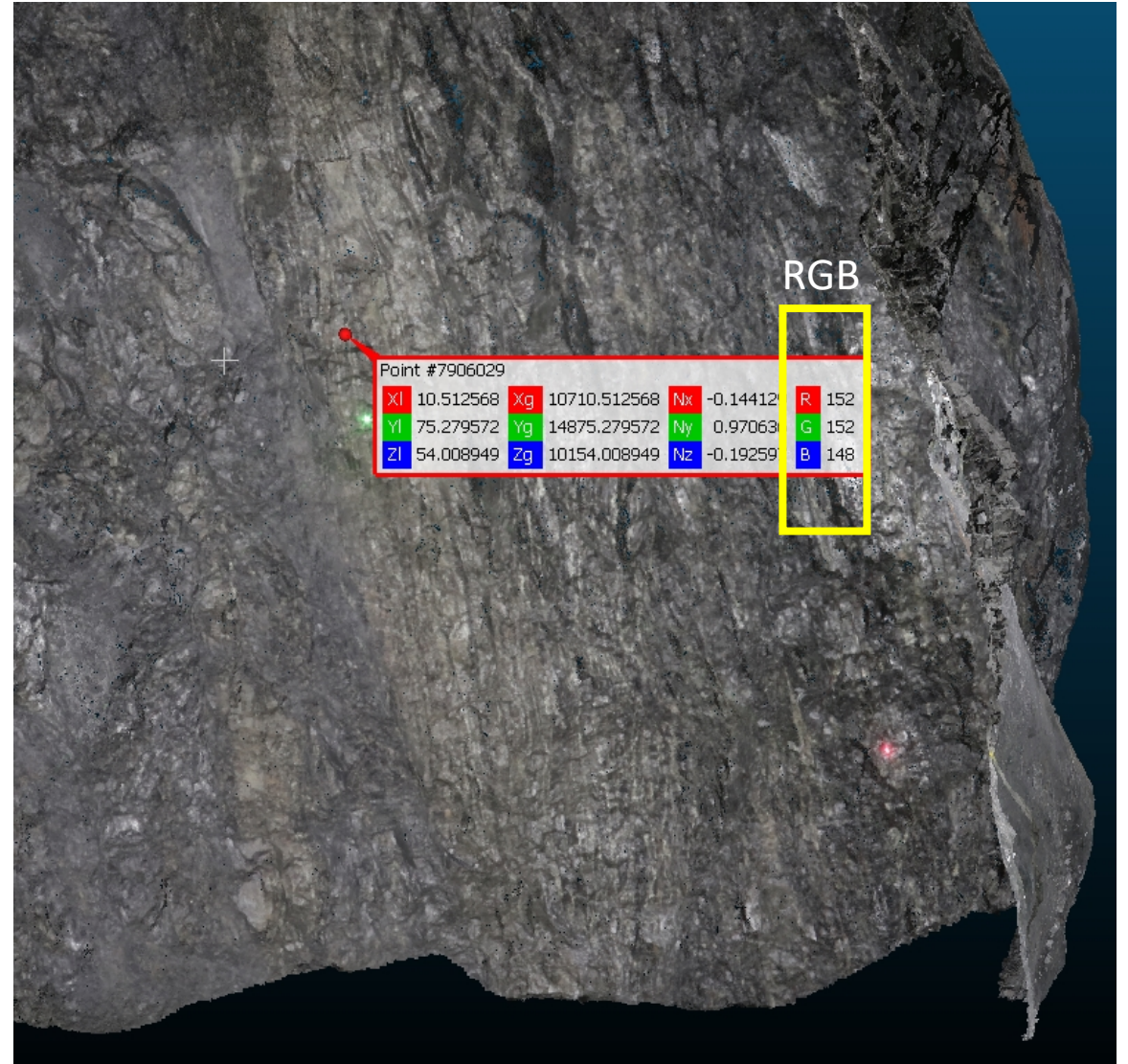
Orientated Data Declustering

- Form surface generation
 - View fabric in 3D
 - Aids in mine design
 - Combined with mapping and drilling
 - Delineates structural domains



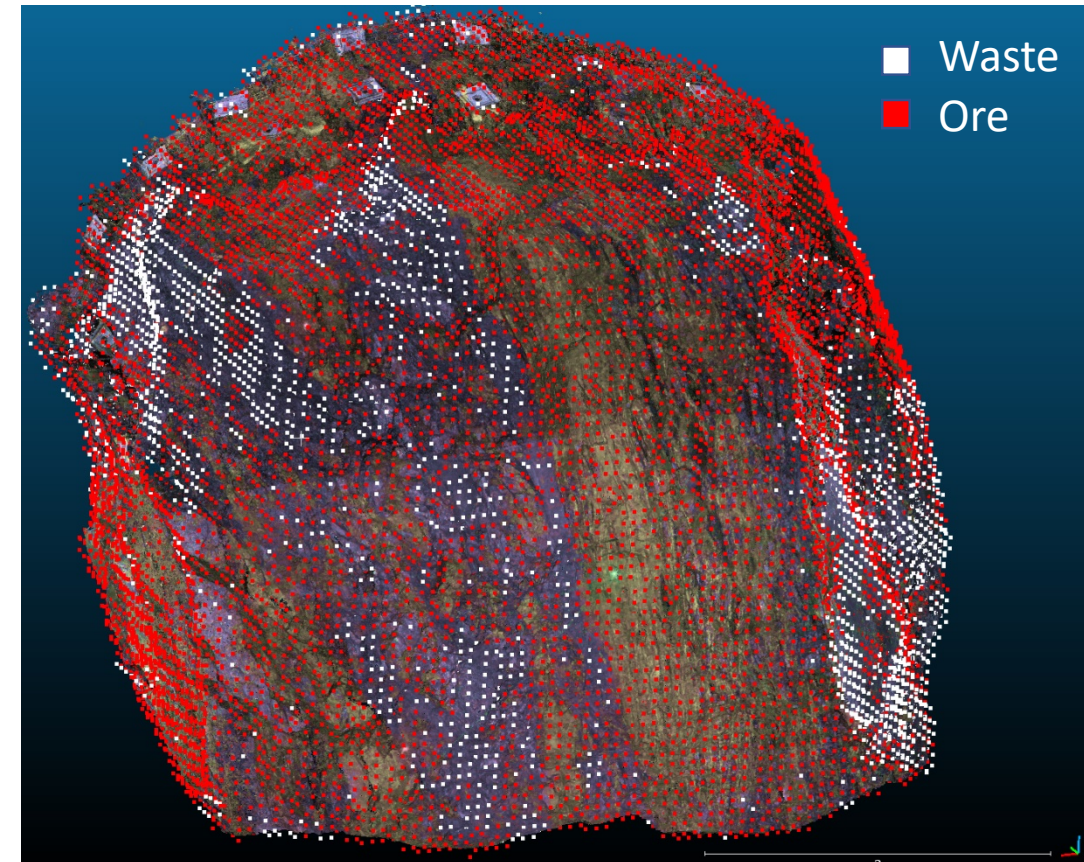
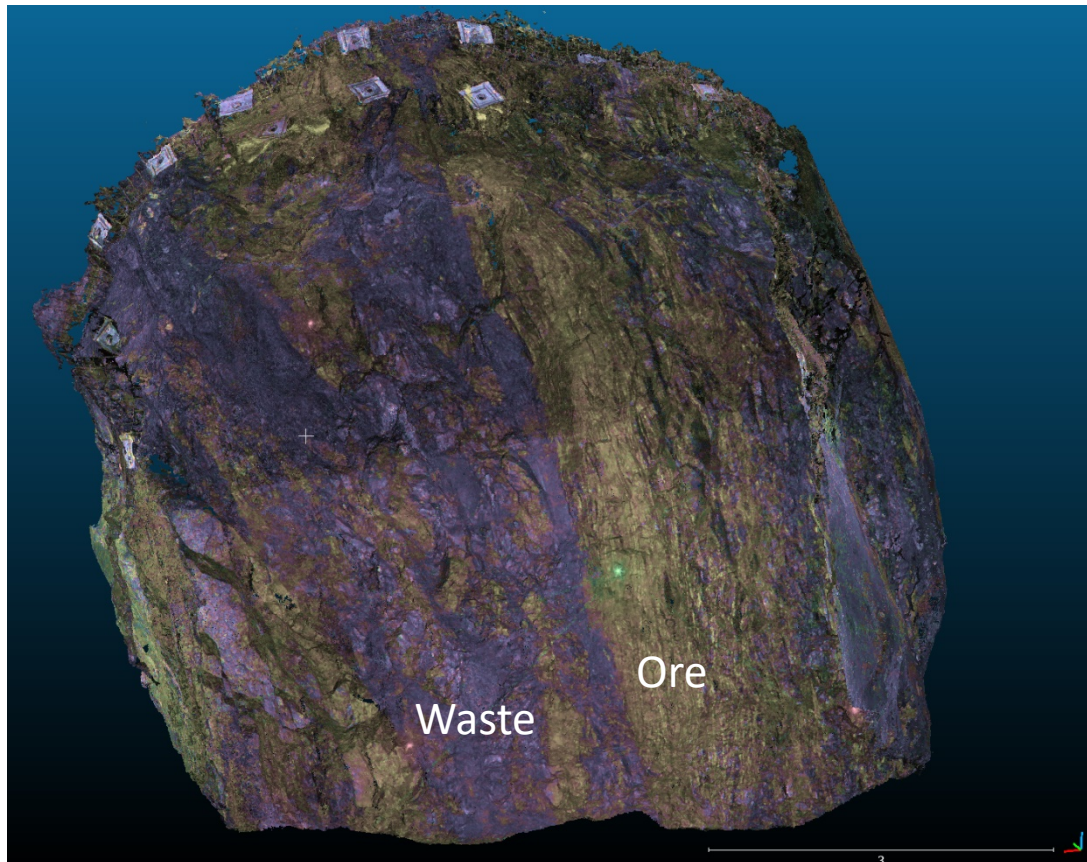
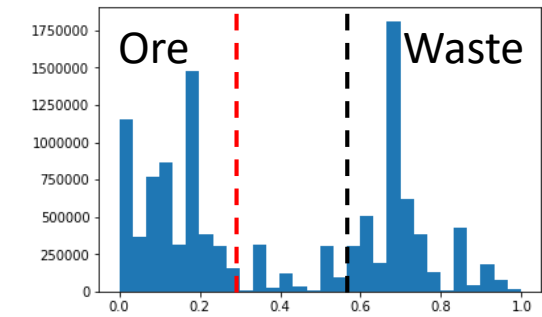
Automated Lithological Mapping

- Dense point cloud
 - Millions of points
 - Stores RGB and normal information
- RGB
 - Colour information from underlying images



Automated Lithological Mapping

- Classify
 - Peaks in histogram classify sulphides and waste (slates)
 - Reduced onto regular grid



Automated Lithological Mapping

Questions

- Acknowledgments
 - Advisors: Ioan Sanislav, Paul Dirks, Brett Davis
 - MMG Dugald River Mining Technical Services
 - EGRU for support and services
 - James Cook University for scholarship



References

- Xu, G., 1996. Structural Geology and Origin of the Dugald River Zn-Pb-Ag Deposit, Mount Isa Inlier, Australia. PhD Dissertation: James Cook University
- Newbery, S.P., Carswell, J.T., Allnut, S.L. and Mutton, A.J. 1994. The Dugald River Zinc-Lead-Silver Deposit; An example of a tectonised Proterozoic stratabound sulphide deposit. International Symposium – World Zinc '93. Hobart, 7-21.
- Carson, C.J., Hutton, L.J., Tithnall, I.W., Perkins, W.G. 2009. Joint GSQ-GA NGA geochronology project, Mount Isa Region, 2007 – 2008. Queensland Geological Record 2008/05
- Geological Survey of Queensland 2012 QLD Geological Digital Data - QLD Geology, Structural Framework, November 2012. Bioregional Assessment Source Dataset. Viewed 10 December 2018, <http://data.bioregionalassessments.gov.au/dataset/a841bdfd-376c-4c7b-afd4-e92aba991f06>
- <https://www.mmg.com/wp-content/uploads/2019/10/June-2019-MMG-Mineral-Resources-Ore-Reserves-Statement-and-Appendix.pdf>
- Dugald River Orebody Knowledge Study, 2017. MMG internal company report. 320pp

